

Lyric resistor pack modification

Date released – September 2016

Apply to: – **All Lyric models**

This modification should be made to prevent freezing and locking up with any network feature, or corruption of the front display.

This guide explains the process step-by-step and should be carried out only by approved Cyrus agents. Full anti-static procedures must be followed at all times to prevent damage to the unit.

All information contained within this document is privileged and confidential, and must not be shared outside of your organisation without the express permission from Cyrus Audio Ltd.

Tools required:

Torx T10 screwdriver
Philips screwdriver
Solder equipment
Tweezers

Parts required:

Resistor pack – 4RES, 0 Ω , 1206, 5%, SMD
(Farnell part 2321738)
(RS part 651-7598)
(Digi-Key part CAY16-000J4LFCT-ND)



Step 1 – Cover release

Ensure that Lyric is placed onto a soft surface to prevent damage to the cover

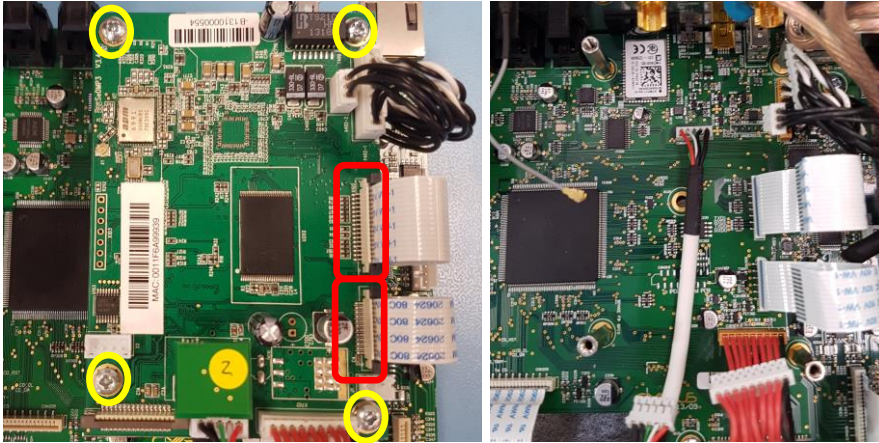
Turn Lyric upside-down to reveal two sets of screws on the outer edges of the unit, holding the lid in place. There are three on each side. Remove these using a Torx T10 screwdriver.



Step 2 – Cover removal

Carefully stand Lyric back up on to its feet. The top cover can now be removed by sliding it carefully towards the back of the unit.

Be sure to keep the cover carefully stored until re-fitted to prevent damage.

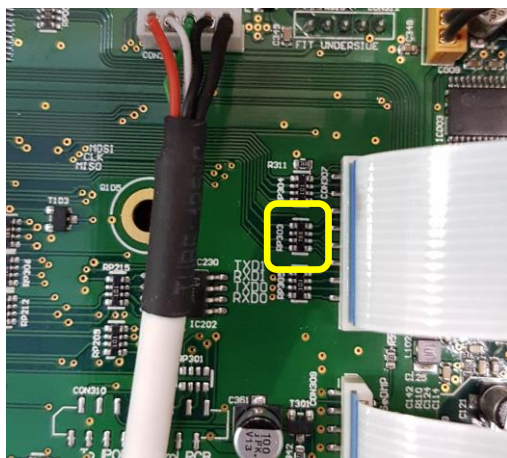


Network module in-situ

Network module removed

Step 3 – Network module removal

Disconnect all of the cables from the network streaming module (ensuring the two retaining clips highlighted in red are released first) and remove all four screws holding the circuit board to the support pillars.



Step 4 – Component replacement

Identify the resistor pack marked 'RP303' and remove it, using tweezers if necessary to grip the component.

Replace it with a 0Ω resistor pack of the same size and type (see parts required list), being careful to ensure that the legs are not shorted by solder.



Step 5 – Re-fitting of the network streaming module

Re-attach the network module by siting it on the four pillars and tightening the screws, being careful not to overtighten them. Ensure that all connecting cables are re-attached correctly. The retaining clips for the flexible cables must be re-engaged.



Step 6 – Finishing

Carefully slide the lid back onto Lyric, ensuring that it is the correct way round (there should be a gap between top cover and front display of approximately 11mm). All six lid screws must be secured but not overtightened.